



New Main line Q.C.R.
South of station -
looking South. 1953

Marshalling yard.
Q.C.R. looking South.

1953





New Main Line Q.C.R.
mink farm - Looking
South.

1953

New Main Line - Q.C.R.
Exact location un-
certain. 1953





New Main Line - Q.C.R.
Bridge - Looking North

1953

New Main Line - Q.C.R.
North End.

1953





New Main Line - Q.C.R.
Mink farm - Looking
North.

1953

New Main Line - Q.C.R.
Mink farm - Looking
South.

1953





New Main Line - Q.C.R.
Mink Farm - looking North

1953

Marshalling yard Q.C.R.
Looking South.

1953





New Main Line - Q.C.R.
North end of Marshalling
yard.

1954

Loading Mill tailings
for railway Ballast
Flinkote Mine.

1953





Q.C.Rly looking south
from St.Alphonse St.

April 1955

Q.C.R. dismantling old
station.

April 1955





Dismantling operations
abandoned Q.C.R. over-
pass in front of
Johnson's Street.

April 55

Q.C.Rly milk farm looking
North from St. Alphonse
Street.

April 1955





Level crossing Q.C.Rly
and No.1 Highway South
end diversion.

April 1955

Q.C.R.Dismantling
abandoned overpass in
front of Johnson's office

April 1953





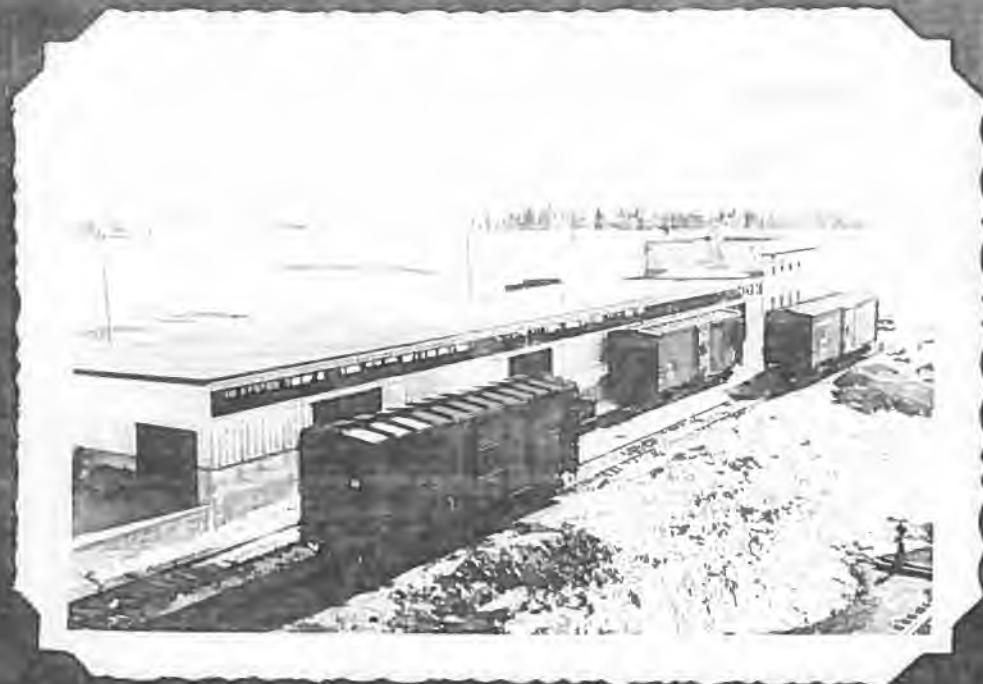
Marshalling yard taken
from coal chute looking
North.

April 1955

Q.C.Rly Bridge

April 1955





Freight shed & Station
taken from coal chute,
looking South.

April 1955

Freight shed taken from
coal chute.

April 1955





Coal chute & railway
station looking North.

April 1955

Railway Station & Freight
Shed looking North.

April 1955





Demolishing old turntable

June 9/55

Dismantling old turn
table.

June 1955





Final clean-up of yard
road near freight shed.

June 28/55

Demolishing old turntable.

June 16/55





Showing deterioration of
asphalt paving in station
yard.

Sept 6/55

Showing deterioration of
asphalt paving in station
yard.

Sept 6/55





Laying 12-inch sewer and
8-inch water line on
upper Alfred Street.

June 1955

Landscaping operation.

June 1955





Extension to Mitchell
Street looking toward
Notre Dame Street.

April 1955

Connection to sewer and
water mains on Alfred
Street extension.

June 2, 1955





New Mooney Street
Looking South.

April 55

Mooney Street looking
North.

April 1955





New entrance to Johnson's
mine from New Mooney St.

April 1955

Alfred Street from new
Mooney Street.

April 1955





Alfred Street - looking
down prefabricated man-
hole.

June 9, 1955

New pump station on St.
Alphonse Street.

April 1955





New Mooney Street.

1954.

View of new Mooney Street
and Johnson's entrance
from reservoir.

May 1955





Showing detail of 8-inch
water pipe connection at
upper end of Alfred St.

June 17.55

View of new Anglican
Church and Johnson's
office new sites.

June 28,55





View of completed new
entrance to Mitchell
Street.

June 28, 55

New 8-inch Century Asbestos
Cement Pipe water line to
Johnson's plant from
Alfred Street.

July 12, 55





Laying 8-inch water main
to Johnson's Plant.

July 21, 55

Final connection of 8-
inch water main to
Johnson's plant.

July 22/55





NORTH BY-PASS

Bell Telephone rig for
digging post holes.

June 1955.

NORTH BY-PASS

Bell Telephone post hole
digger in operation.

June 1955.





Construction of North
By-Pass. King Plant in
background.

May 1955

Placing fire hydrant
on North By-Pass.

May 1955





Upstream view of twin
box culvert over Thetford
River. Each box 20'x30'.

May 1955

Filling in "Soft Spot"
on North By-Pass.

May 1955





Loading gravel in
LeBel Pit near Black
Lake.

May 31, 1955

Upstream view through one
half of twin box culvert
over Thetford River.

May 1955





Laying gravel on North
By-Pass.

May 26, 1955

Tamping mill tailings
around 8-inch asbestos
cement water main on North
By-Pass. Bell Bridge in
background.

May 1955





Laying 8-inch asbestos
cement water main on
North By-Pass.

May 1955

North By-Pass under
construction. Connection
with Labranche Street.

May 1955





Loading gravel in LeBel
pit for North By-Pass.

May 30, 1955

Laying gravel on
North By-Pass.

May 20, 1955





Pipe's eye view of trench
for water main on North
By-Pass. King mill in
background.

May 1955

Loading gravel in
LeBel Pit for
North By-Pass.





Culvert over Thetford
River taken from Bell
Bridge looking North.

April 1955

Laying combination 8-inch
Asbestos cement and
cement cast iron water
main on Northern By-Pass.

May 1955



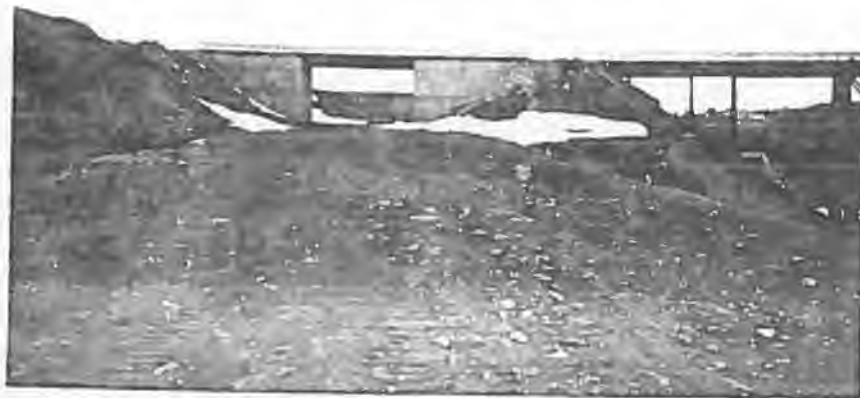


Bell Bridge looking
North.

April 1955

North Road Diversion
taken from Bell Bridge
looking South.

April 1955





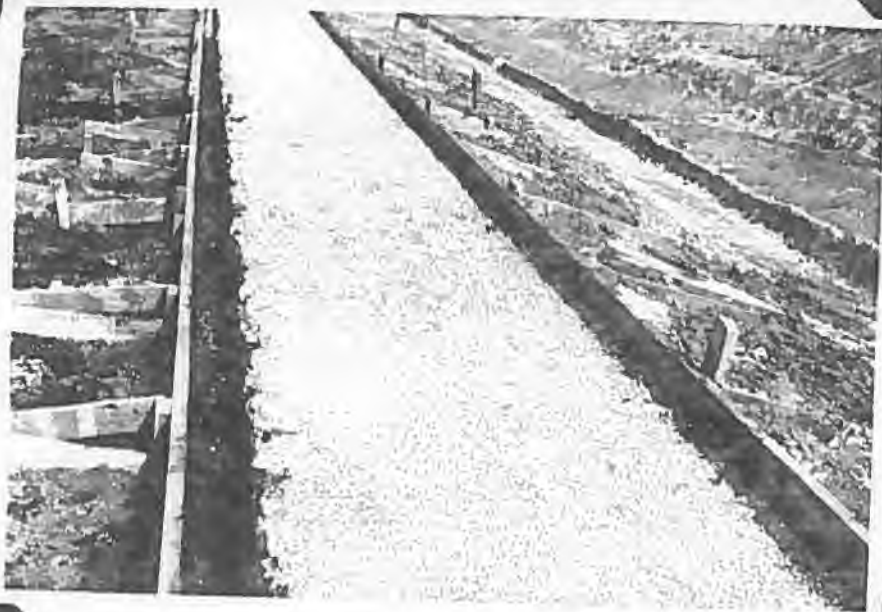
Looking west from Clinic.

June 9, 1955

Looking South from Bell
Bridge.

June 9, 1955





Showing stone and gravel
foundation for sidewalk

June 16, 1955

Showing construction of
sidewalks screened coarse
mill tailings over 4-inch
crushed stone.

June 16, 55





Pouring concrete for
sidewalk.

June 16, 1955

Construction of masonry
wall behind the Charest
house.

July 6, 1955





Cutting entry for St. Antoine. Entry for St. Francois in background showing also City construction of man-hole.

July 6, 1955

Trench for Bell Telephone cable by the Charest house.

July 6/55





Entry to St. Francois St.,
cut to rough grade.

July 6, 1955

Cutting entry to St. Antoine Street.

July 6, 1955





Extension to upstream end
of 6 x 6 culvert.

August 5/55

Extending upstream end of
6x6 culvert to give wider
platform for highway.

July 22, 1955





Start of paving
operation

August 9, 1955

Official Opening

August 9, 1955





Widening shoulder over
6 x 6 culvert.

August 11/55

Laying second course
of paving.

Aug.10,55





Excavation by Kennedy
Construction of ex-
tention to St. Thomas St.
Sept. 27/55

Widening shoulder over
6 x 6 culvert.

August 11, 55



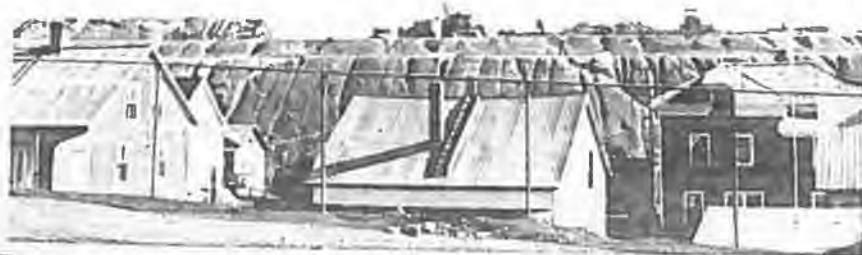


View from top of King
tailings dump.

Sept 27/55

View from Bell yard of
Kennedy Construction ex-
cavating St. Thomas St.

Sept 28, 55





Curve on Pie XI during
paving.

July 31, 56

Curve on Pie XI
immediately prior to
paving.

July 31, 56





Curve on Pie XI after
paving.

July 31, 56



Laying sewer and water
lines on Johnson Street.

June 1955

Connection of Johnson's
Park with North By-Pass.

June 1955





Prefabricated manhole

May 31, 1955

Widening Johnson Street.

June 1955



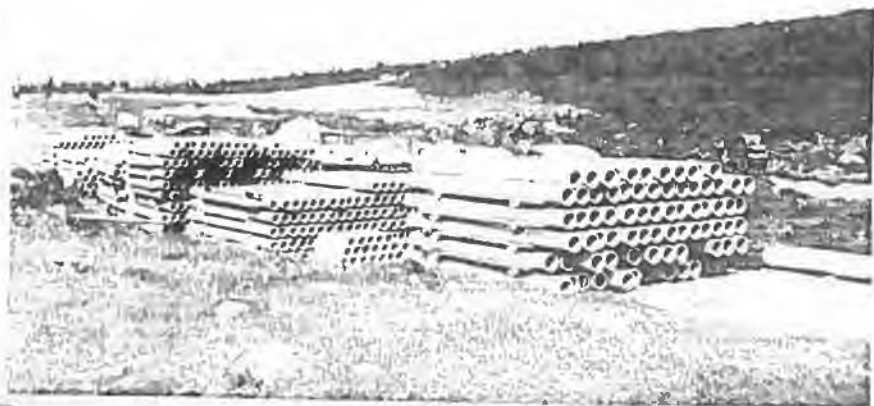


Atlas "Century" pipe to
be installed. Class 150
6-inch & 8-inch.

May 31, 55

Centre Street.

May 31, 1955





Showing connection to
fire hydrant.

May 31, 1955

Johnson's Park
development.

May 23, 1955





First operations in
Johnson's Park. Cut
for roadway over top
of hill.

May 1955

Johnson's Park
development.

May 23, 55





Looking West across
Johnsons' park area.

April 1955

Looking West across
Johnson's park area.

April 1955





Laying 24-inch sewer on
"Centre Street" Rock sub-
grade for street in fore-
ground.

June 17.55

Excavation for roadways.

June 8, 1955





Showing base of fire
hydrant and method of
draining.

June 28/55

Blast in rock for sub-
grade of street.

June 17/55





Showing construction of
catch basin.

June 28/55

Showing domestic lines
for water and sewage.

June 28/55





8-inch waterline connection and sewer junction at upper end of "Center St.:"

June 29/55

Excavation for sewer pipe beneath 8-inch A.C. water line on North By-Pass.

July 4/55





Showing method of
applying joint compound
in 12-inch reinforced
concrete sewer pipe.

June 28/55

Construction of catch
basin.

June 28/55





Start of gravel pit at
Black Lake to supply road
gravel for Johnson's Park.

July 5/55

Showing base of catch
basin water line connec-
tion to fire hydrant and
sewer connection to base
of manhole at top of
sylvain street.

July 12/55





Trench for sewer and
water pipes at in-
tersection with Pie X1
Street.

Aug. 5/55

First excavation for
houses on Sylvain St.

August 5/55





Looking west at intersection of Pie XI and "Last" Street, showing new foundations.

Aug. 25/55

Intersection of Pie XI and "Last" Streets.

Aut 25/55





Johnson's Park

Sept 27/55

Sewer and Water Lines on
Johnson Street at west
end of development.

Sept 8/55





View of houses placed
on Robinson Street.

Jan 7/56

Showing houses moved
to Robinson Street.

Oct 25/55



The Relocation Project
Thetford Mines
V. 2.



Alfred Street development
Foundation ready to
receive first house of
1955 move.

July 4/55

Alfred Street development
First house of 1955 move,
ready to go to Alfred St.

July 4/55





Foundation construction
on Alfred Street.

July 12/55

A study in nonchalance. A
house on Victoria Street
ready for moving.
July 12/55



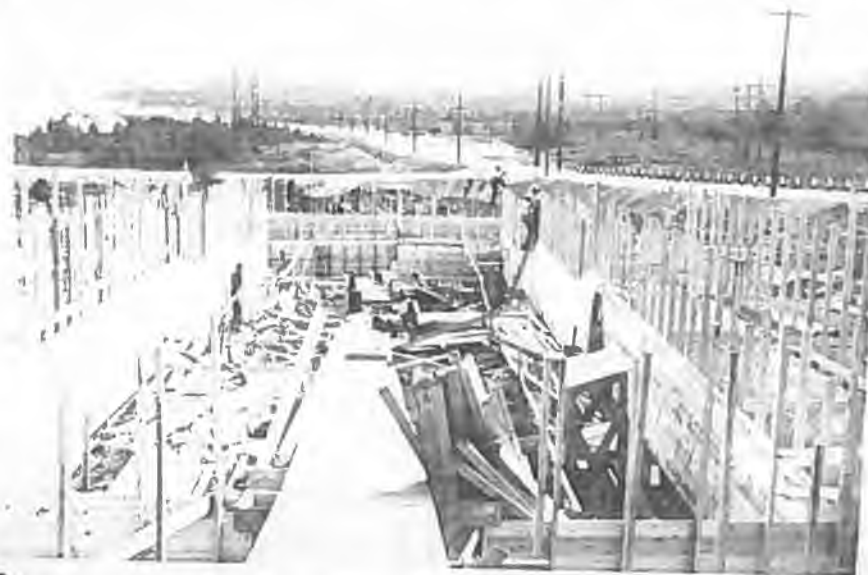


Foundations for new
Johnson's office at
corner of Alfred Street
and new Mooney Street.

June 12/55

Foundations for new
Anglican Church at corner
of Alfred Street and new
Mooney Street.

July 12/55





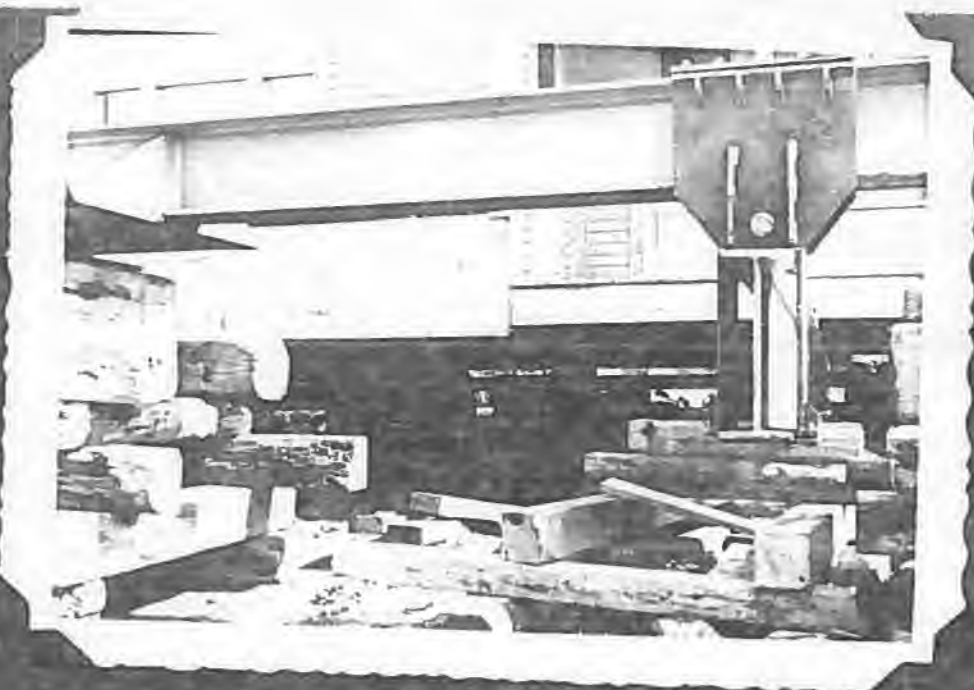
Victoria to Alfred St.
House of D. Mathers-
showing float backed
under house, ready for
move.

Aug. 2/55

Trailer designed by
Kennedy Construction for
moving houses.

July 22/55





Victoria to Alfred St.
House of D. Mathers
showing house on float
prior to move.

Victoria to Alfred St.
House of D. Mathers -
showing house on float
prior to move.

Aug. 2/55





Victoria to Alfred St.,
House of D, Mathers
en route.

Aug. 3/55

Victoria to Alfred St.,
House of D. Mathers
showing house on float
prior to move.

Aug 2/55





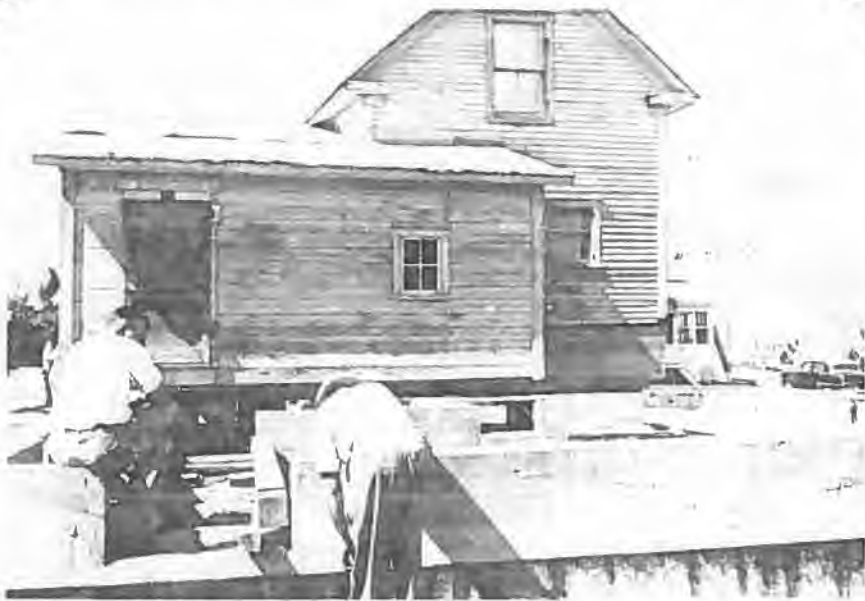
House of D. Mathers
en route.

Aug 3/55

Victoria to Alfred St.,
House of D, Mathers en
route.

August 3/55





House of D. Mathers
being placed on new
foundations on Alfred
Street.

Aug. 4/55

House of D. Mathers -
ready to be placed on
new foundations.

Aug 3/55





House of F. Morisson
showing method of
supporting house on
float.

Aug 5/55

House of F. Morrison
start of trip from
Victoria Street.

Aug 5/55





Showing new foundations
on Alfred Street ready
to receive houses.

Aug 5/55

House of F. Morrison
ready to be backed onto
new foundations on
Alfred Street.

Aug 5/55





Showing trailer in place
under house on Victoria
Street.

Aug 16/55

Pouring foundations for
house on Alfred Street.

Aug 8/55





House being transfered
from float to criks for
final move to new
foundation. Alfred St.

Aug 24/55

House in transit on
trailer on Victoria
Street.

Aug.17/55





Mrs. Pharo's house ready
to move. Sept 8/55

Float in position under
Levigne's house.

Aug 25/55





Brick encased house en
route from Notre Dame St.,
to Johnson's Park.

Sept 23/55

Brick encased house being
moved on to new foundation
on Robinson Street.

Sept 27/55



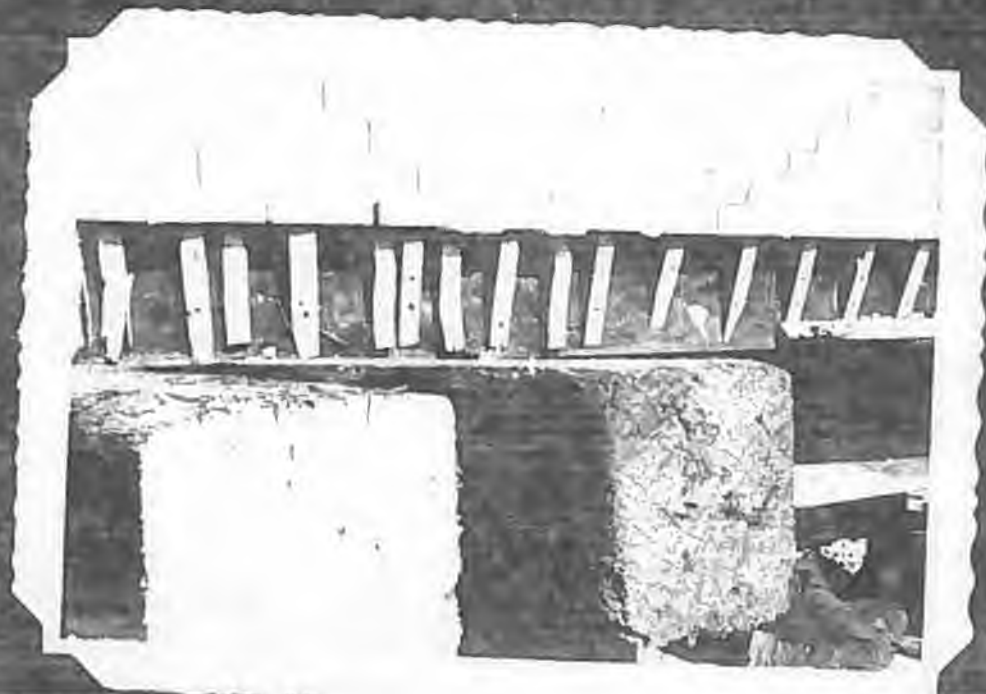


Showing method of
supporting brick casing.

Sept 27/55

House arriving in Johnson
Park.

Sept 27/55





The Masonic Lodge in
difficulties.
Nov. 3/55

Notre Dame Street South
Oct 25/55





Moving the building of
Wilfrid Morissette. A
tight squeeze.

Nov 7/55

The Mascnic Lodge in
more difficulties.

Nov. 3/55





Another house arriving
in Johnson's Park.

Nov. 55

Masonic Hall ready to
slide onto new founda-
tions on Alfred St.

Nov. 55





Geo. McCammon's house
being placed on Alfred
Street.

July 25/56

West side of Notre Dame
South (old Mooney St)
after removal of Bldgs.

Nov. 55





General view of subsidence
area from reservoir.

May 1955

First signs of surface
cracking at west end of
Johnson's Mine.

May 1955





Looking East across Bell/
Johnson/ King pits
showing cracks due to
subsidence.

April 1955

Surface subsidence on
South side of King Pit due
to King Block 910-A and
Johnson's Block 18.

May 18/55





Showing subsidence over
Johnson Block 18 and
King Block 910A

Dec. 1-55

Showing development of
cracks toward Ste Marie
Street.

August 19/55





View of Johnson's
tailings from Q.C.R.
station showing cracks
induced by subsidence.

April 55



No.1 Highway between
Black Lake and Thetford
Mines - looking North.

May 31/55



King operation in "Bell
Wedge" from South side of
Pit.

May 1955

View of King operations
in Bell Wedge.

May 1955





Showing King operations.

June 9/55

King Mine operations in
Bell Wedge.

April 1955

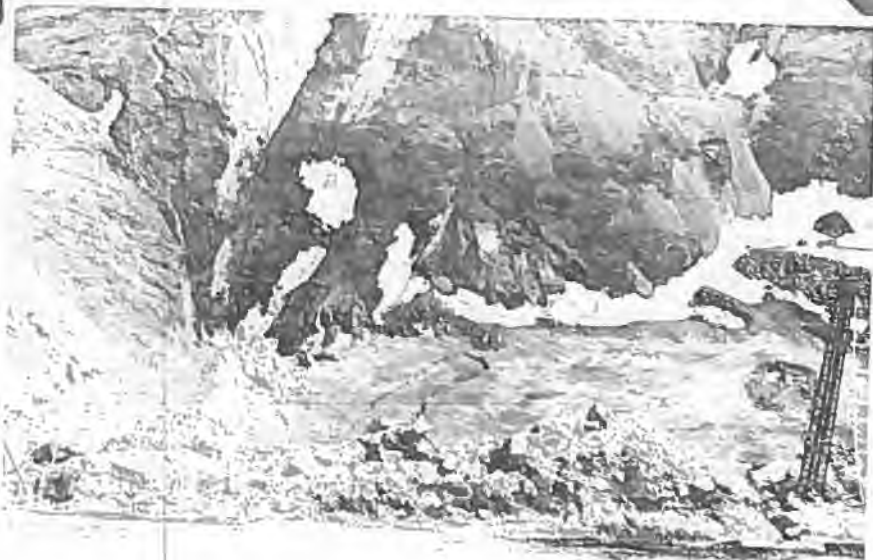




Bell Wedge
November 25/55

First operations of
"Bell Wedge" across
Notre Dame Street.
Aug8/55





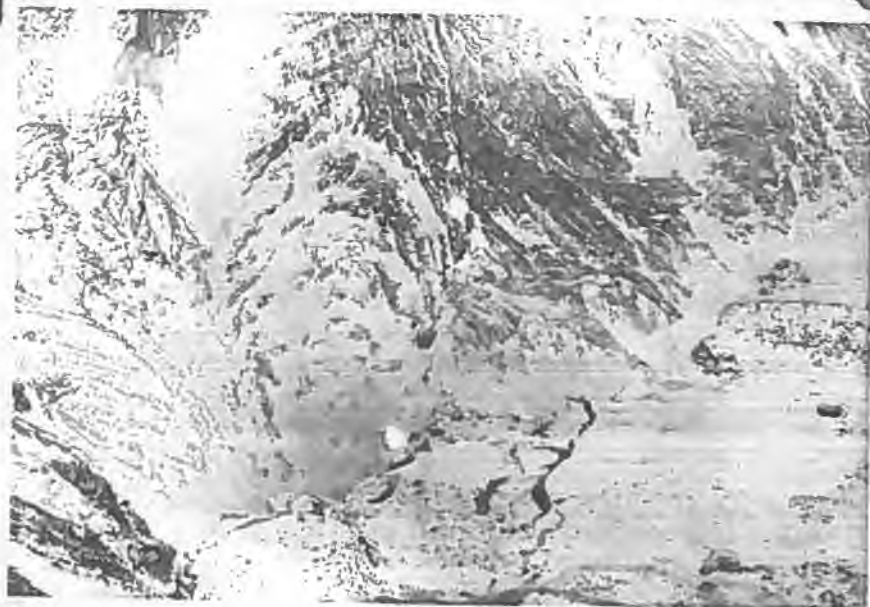
Showing headframe for
cleaning out old shaft
and also cracking due
to caving operations.

June 9/55

View of bottom of Bell
Pit showing subsidence
and cracks into Bell
caving area.

April 1955





Showing advancing subsidence cracks due to Bell mining.

Dec.1/55



View looking up Victoria
Street toward Johnson's
plant.

April 1955



Johnson's siding near
Fibre storage shed
looking north.

April 1955

Johnson's siding looking
toward King Mine.

April 1955





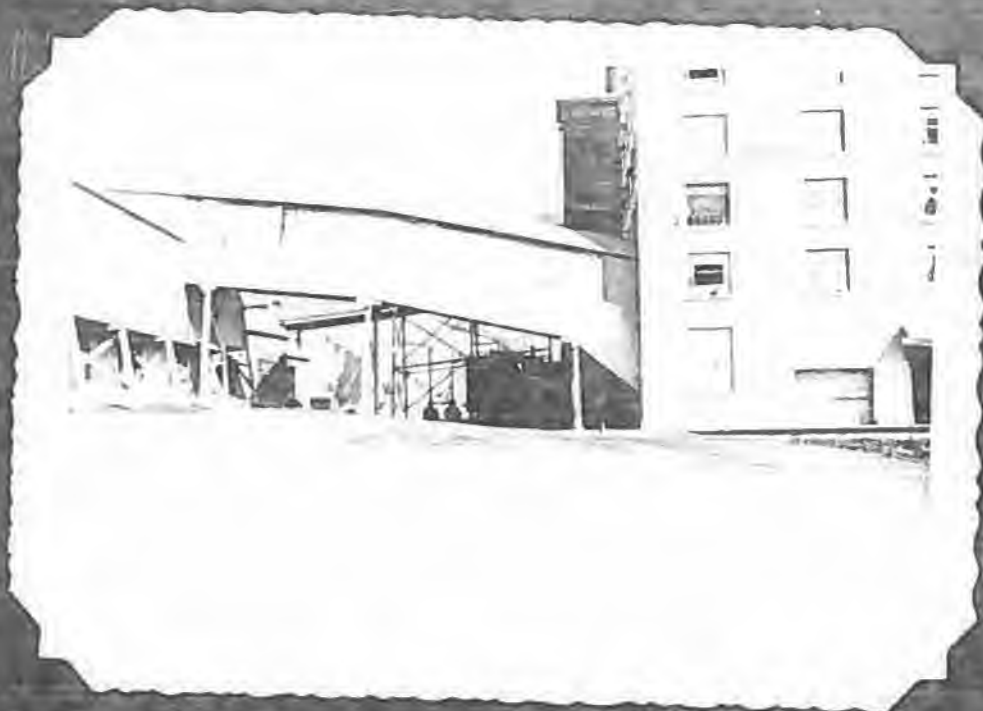
1953

Johnson's Spur

Johnson's siding near
fibre storage shed
looking south.

April 1955





View of track & Storage
shed. Pipe in foreground
in new 8-inch Century
Asbestos cement pipe
line to Johnson's plant.
July 12/55

View of newly paved
yard in front of mill.

July 28/55





Normandie Mine from
Black Lake. Diversion
channel of Lake Asbestos
in foreground.

July 5/55

Thetford Mines from new
Provincial No.1 Highway.

July 5/55





Showing telephone and
power lines at corner
of Falardeau Street and
Pie XI. July 8/55

Showing telephone and
power lines on Johnson
Street.

July 8/55





Showing telephone and
Power lines at junction
of North By-Pass and
Pie X1. July 8/55

Showing telephone and
power lines at corner
of Johnson St and Pie X1.

July 8/55





Showing telephone and
power lines at corner
of Letourneau St. & Pie
Xl. July 8/55

Showing telephone and
power lines on Notre
Dame Street South of
Johnson's Street.

July 8/55





Contractor's office on
Alfred Street.

July 12/55

Showing telephone and power
lines at corner of Johnson
Street and Pie XII

July 8/55





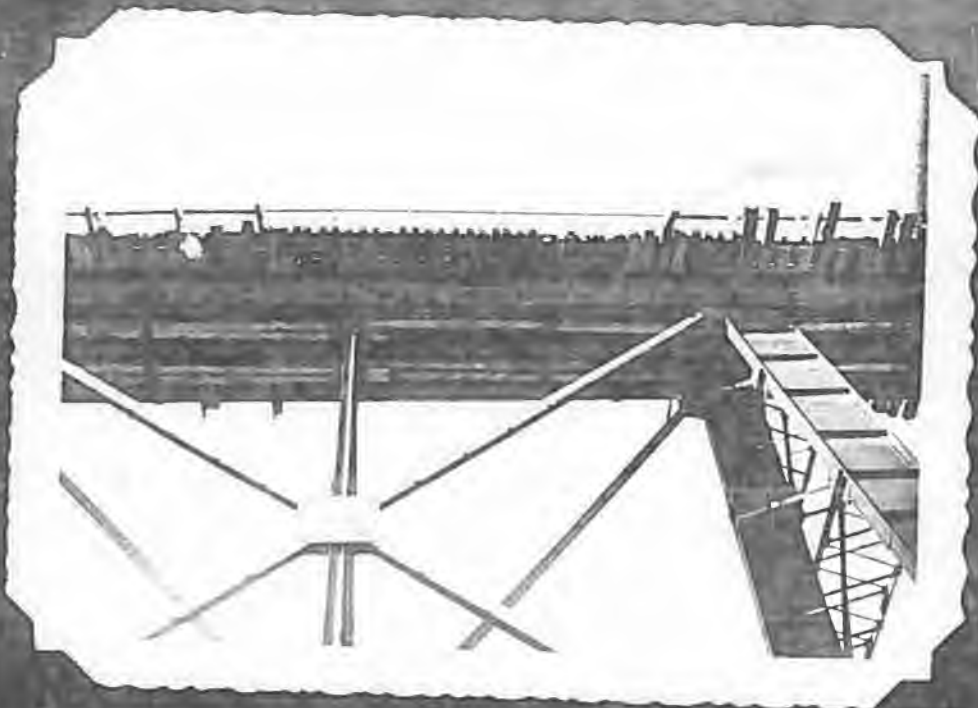
View of Bell Bridge from
from Thetford River.

July 20/55

Repairing retaining
walls at foot of Bell
Bridge.

July 20/55





Repairing retaining walls
at foot of Bell Bridge.
View from Bridge.

July 20/55

View of Bell Bridge from
Thetford River.

July 20.55





Showing grass strip
between sidewalk and
street paving on
Gaudreau St. no curb.

Aug 16/55

Showing method of cons-
truction curb on Dubresne
Street.

Aug 16/55





City sewer being laid in
gully to north of
Ferland Street. West

Aug 17/55

Showing grass strip
between sidewalk and
street on Cyr St.-

No curb

Aug 16/55



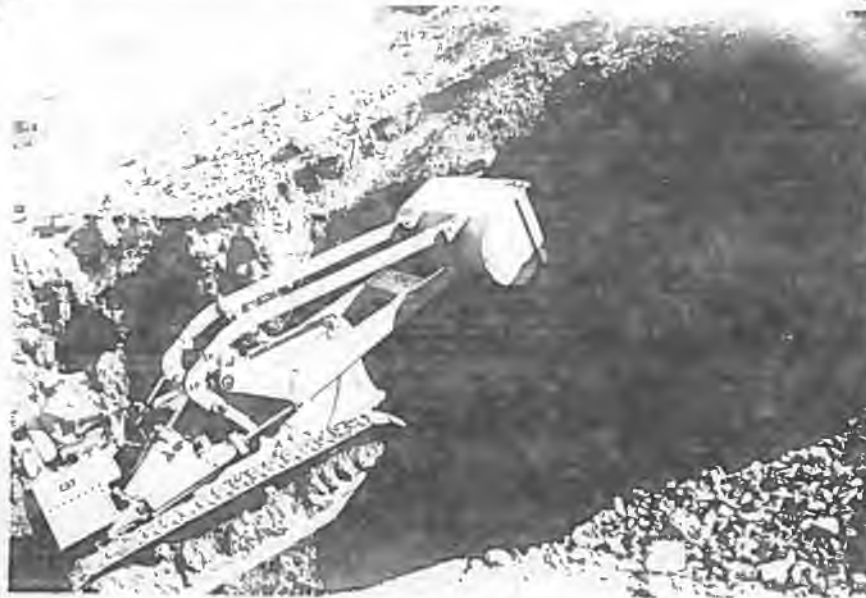


Excavating old railway
embankment to connect
Lafrance & Alfred Streets.

August 24/55

View of Beaver Mine

Aug 25/55





Showing Johnson Creek
after rain.

August 22/55

Temporary bridge over
Thetford river.

Aug 24/55





Showing lots available
on west side of Pie XII
Street at Falardeau St.

Sept 7
1955

Looking toward Johnson's
Park at intersection of
Pie XII and Falardeau
Streets.

Sept 7/55





Overpass on Notre Dame
Street before removal.

July 18/56

72" x 44" culvert in
Johnson's creek on
Lafrance Street.

July 30/56





Overpass on Notre Dame
Street after removal.

July 19/56



Laying 6-inch water main
by City.

Nov. 21/55

Completing cut.

Nov. 24/55





New Anglican Church
nearing completion

Jan 7/56

Showing construction of
Church.

Sept 6/55





View of buildings
recently placed.

Jan 7/56

Another view of buildings
recently placed here.
Johnson's at right.

Jan 7/56





View of new Johnson's
office and new Mooney
Street.

Jan 7/56

Alfred Street after
paving.

July 1956



